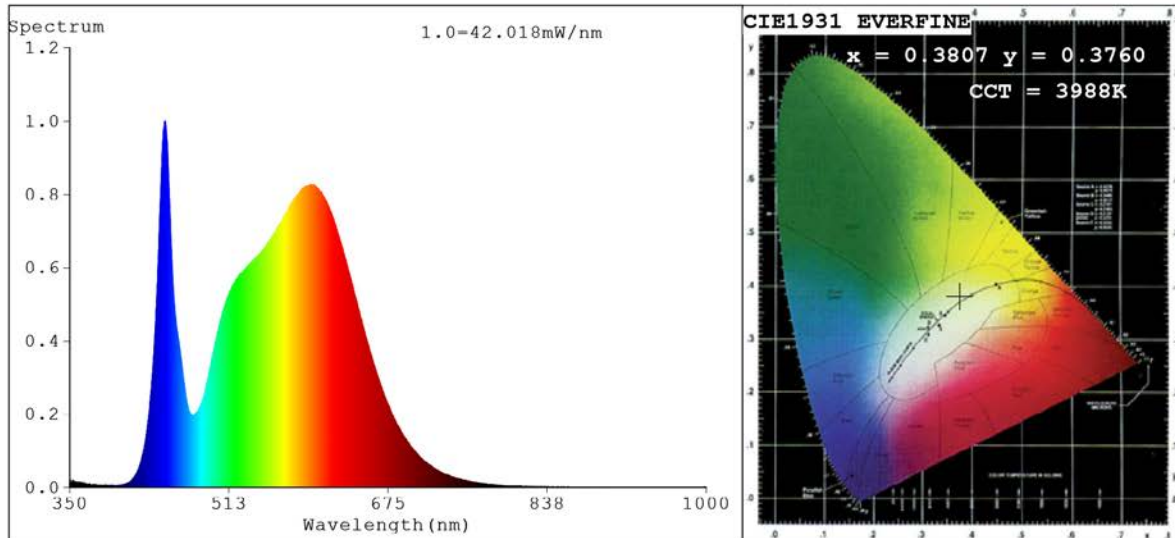


Spectrum Test Report



Color Parameters:

Chromaticity Coordinate: $x=0.3807$ $y=0.3760$ $u'=0.2256$ $v'=0.5013$
 CCT=3988K (Duv=-0.0004) Dominant WL:Ld =579.3nm Purity=27.1%
 Ratio:R=18.5% G=78.1% B=3.4%;;Peak WL:Lp=447.1nm FWHM=18.4nm
 Render Index:Ra=83.6 CRI=77.5 TM30:Rf=82 Rg=97
 R1 =82 R2 =88 R3 =93 R4 =84 R5 =83 R6 =84 R7 =86
 R8 =67 R9 =13 R10=73 R11=84 R12=66 R13=84 R14=96 R15=76

Photo Parameters:

Flux = 2006 lm Eff. : 136.16 lm/W Fe = 6.154 W

Electrical parameters:

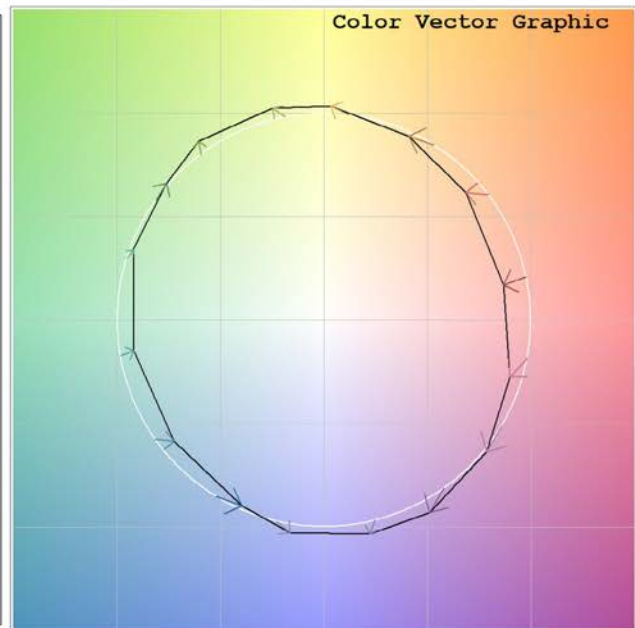
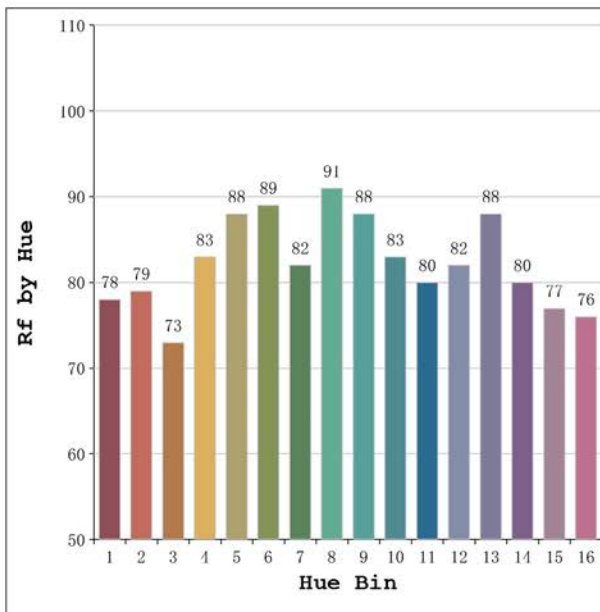
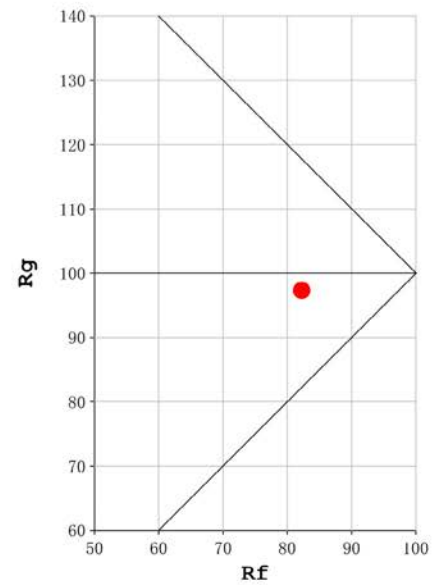
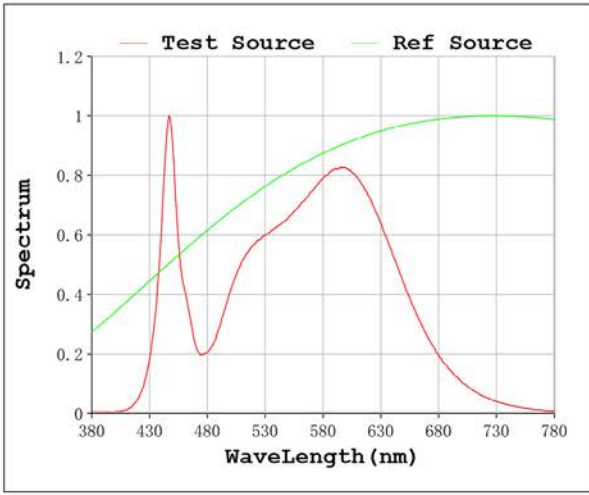
V = 23.998 V I = 0.6140 A P = 14.73 W PF = 1.000

Status: Integral T = 717 ms Ip = 50616 (77%)

Model:Ecoled Élite 15 ip67
 Tester:Sergio Carneros
 Temperature:27Deg
 Manufacturer:Luz Negra S.L

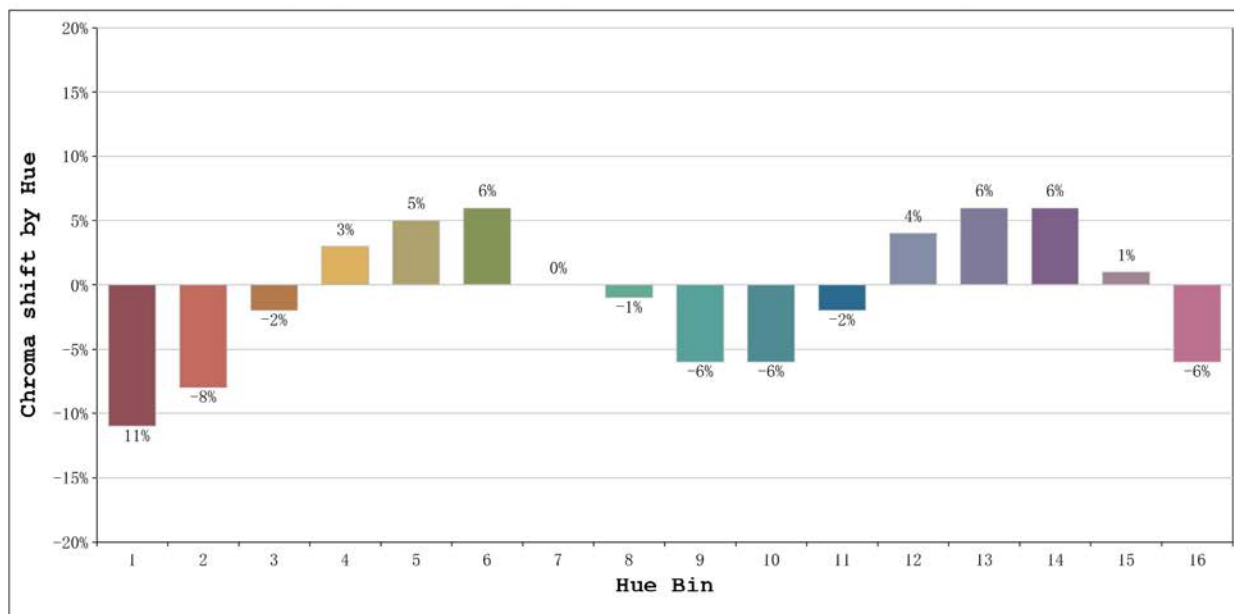
Number: 31.160
 Date:2024-11-18 08:44:35
 Humidity:40%
 Remarks:tira flexible de 100cm

Rf: 82 **CCT: 3988 K** **u': 0.2256**
Rg: 97 **Duv: -0.0004** **v': 0.5013**



Model:Ecoled Élite 15 ip67
 Tester:Sergio Carneros
 Temperature:27Deg
 Manufacturer:Luz Negra S.L

Number: 31.160
 Date:2024-11-18 08:44:35
 Humidity:40%
 Remarks:tira flexible de 100cm



			Graphic shift(%)	
Hue Bin	Hue Angle	Rf	Chroma	Hue
1	0.0° - 22.5°	78	-11	-1
2	22.5° - 45.0°	79	-8	7
3	45.0° - 67.5°	73	-2	12
4	67.5° - 90.0°	83	3	9
5	90.0° - 112.5°	88	5	5
6	112.5° - 135.0°	89	6	-2
7	135.0° - 157.5°	82	0	-9
8	157.5° - 180.0°	91	-1	-4
9	180.0° - 202.5°	88	-6	0
10	202.5° - 225.0°	83	-6	6
11	225.0° - 247.5°	80	-2	13
12	247.5° - 270.0°	82	4	7
13	270.0° - 292.5°	88	6	-3
14	292.5° - 315.0°	80	6	-11
15	315.0° - 337.5°	77	1	-13
16	337.5° - 360.0°	76	-6	-10

Model:Ecoled Élite 15 ip67
Tester:Sergio Carneros
Temperature:27Deg
Manufacturer:Luz Negra S.L

Number: 31.160
Date:2024-11-18 08:44:35
Humidity:40%
Remarks:tira flexible de 100cm